



🌐 heygears.com

✉ info@heygears.com

☎ Tel: +1 (318) 353-4295 (Global)/ +1 (949) 418-9418 (USA) / +44 148-396-8549 (EU)

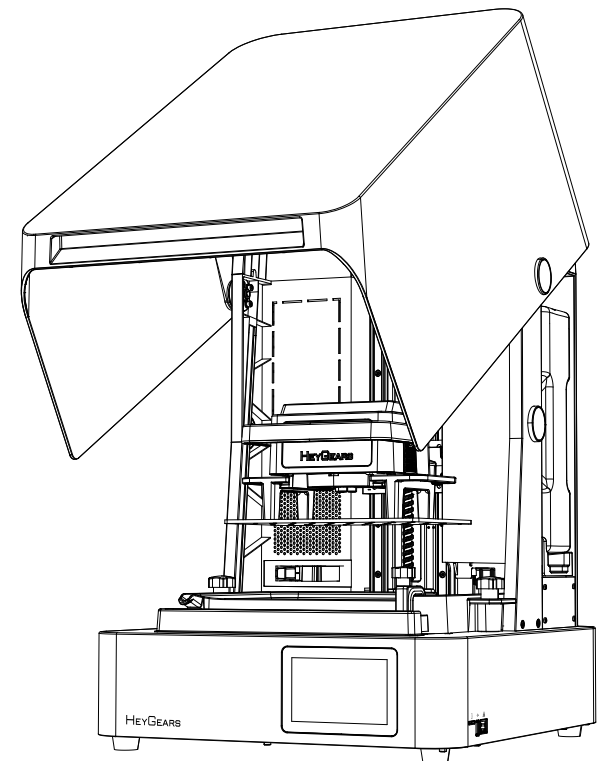
📍 USA-17931 Sky Park Circle, Suite E, Irvine, CA, 92614
CHN-Block B2, 501, 601, Enterprise Accelerator, Kaifu District, Guangzhou City

Follow us @HeyGears



Reflex 2 Pro

Professional Grade 3D Printer



Please make sure to read and understand this Quick Start before unpacking and installing.


Thank you for choosing HeyGears. For your own safety, please operate as per this Quick Start. If you fail to comply with the instructions in this manual, HeyGears will not be liable for the consequential damages unless required by all applicable laws and regulations.

Please keep this operation manual properly for future reference. The pictures are for reference only and the products are subject to the actual product.




Please scan the QR code to watch the guide videos.


1 Items & Parameters




Reflex 2 Pro 3D Printer
X1




Power Cord
X1




Build Platform
X1




Resin Tank
X1




Heating Scraper
X1




Part Removal Tool
X1




Resin-Refill Lid
X1




Spatula
X1



T-Type Wrench
X1



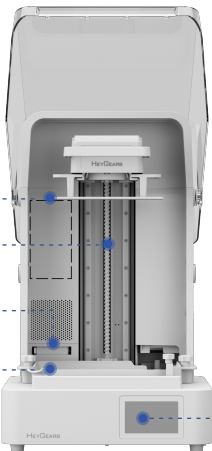
After-sales Service Guide
X1



Quick Start Guide
X1

Name	UltraCraft Rapid Production System	Input	100–240 V~ 50/60 Hz
Model	UltraCraft Reflex 2 Pro	Weight	28 kg
Dimensions	430*445*715 mm	Power	750 W

2 Components



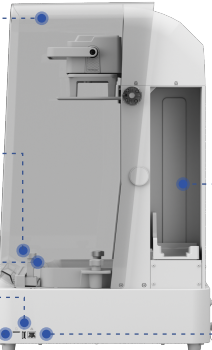
Build Platform

Main Axle

Liquid Level Sensor

Resin Tank

Touch Screen



Hood

Scraper Cover


Resin Cartridge Slot

Scraper

USB Port

Ethernet Port

TF Card Slot

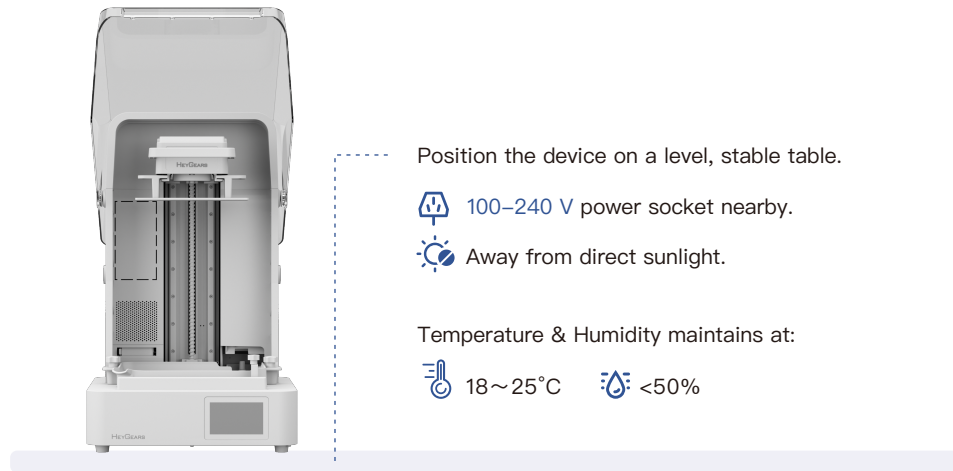


Pulsing Air Path Port

Pulsing COM

Power Switch

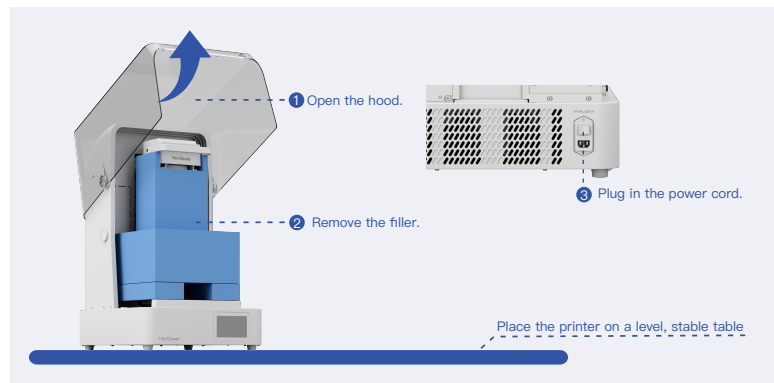
3 Installation Requirements



4 Operation Steps

STEP 1

Place the printer on a level, stable table, and check its appearance to confirm if it's in good condition. Lift the hood to its highest position, take out the filler, and then plug in the provided power cord to the position as the image shows.



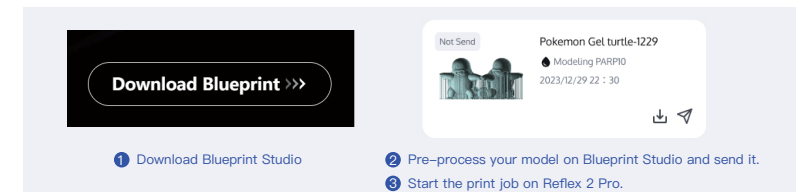
STEP 2

Turn on the power switch, the touch screen will light up. Then follow the instructions on the screen to finish the initial installation guide.



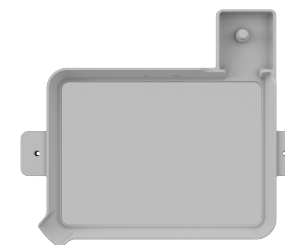
STEP 3

Afterward, please download Blueprint Studio from <https://www.hey-gears.com/SAP/Blueprint>, follow its onboard guide for print preparation (pre-processing) and send the finished printable slice file to your Reflex 2. Then print it on your printer by operating on the printer's touch screen. Videos of guides are available in Help Center on Blueprint Studio.

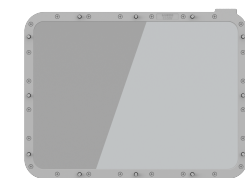


5 Release Film Replacement

Images below are examples of the resin tank and the spare release film (requires separate purchase).



Resin Tank

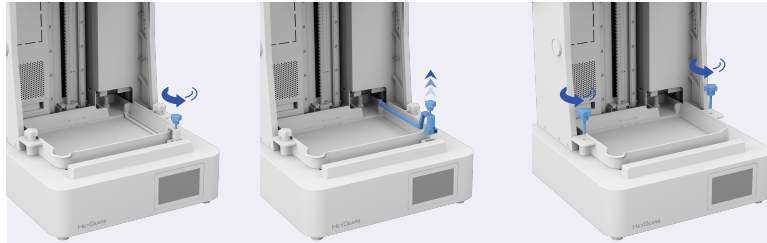


Spare Release Film

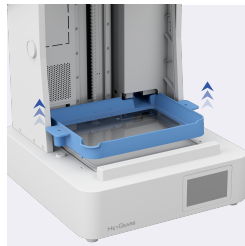
STEP 1

Take out the resin cartridge, and dismount the scraper and the resin tank. If there's residual resin in the tank, clean it thoroughly and then dismount the release film.

① Dismount the scraper.

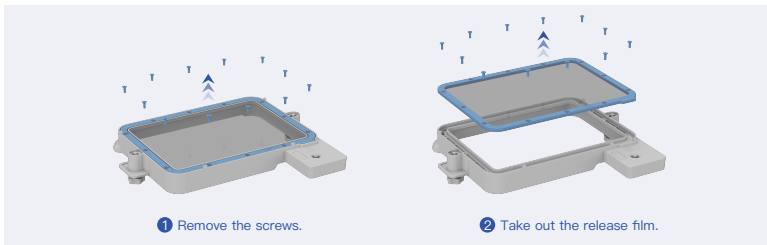


② Remove the resin tank.



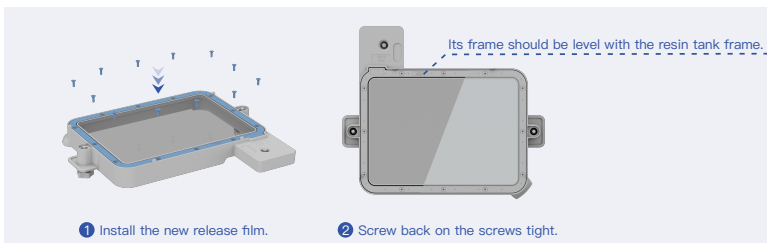
STEP 2

Remove all the screws on the release film from the bottom of the resin tank with the provided wrench. Then remove the film.



STEP 3

Set up a new release film back onto the tank. Screw back tight the screws on the diagonals and then other screws. When the film is installed well in place, its frame should be level with the resin tank frame. Mount back the tank and the scraper onto the printer.



6 Cautions

01



Before inserting the resin cartridge, please make sure the resin-refill lid has been mounted in place.

02



Always remember to close the hood in time whenever you open it for operation. Do NOT open the hood during printing, or print precision might be affected due to dusts, vibration or so.

03



Plastic components such as the hood and the touch screen are not resistant to long-time exposure to resin or alcohol. Please wipe them clean if there's resin or alcohol on them.

04



Please place the printer and resin cartridges properly, away from any light, dusts, or direct sunlight, or printing quality or precision might be affected.

05



Keep the device away from fire.

06



When you use your printer, please pay attention to whether there's any resin on the projection screen. If any, it indicates that the resin tank's release film might have been broken and is leaking resin, which might cause damages to the printer. In this case, clean off the resin as soon as possible, enter the printer's settings and project a pure white image to check the printer's condition. If the printer does not work properly, please contact HeyGears Support.